

BEST

Workplaces
for CommutersSM

2023

BWC Snapshot

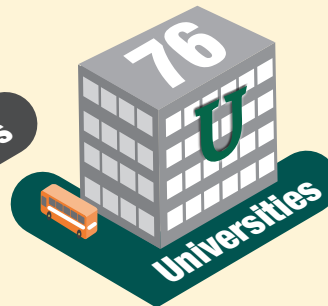
Best Workplaces for Commuters (BWC) is an innovative membership program that provides qualified Workplaces, Universities, and Sites with national recognition and an elite designation for offering outstanding commuter benefits, such as free or low cost bus passes and vanpool fares, and strong telework programs. Those that meet the BWC National Standard of Excellence in commuter benefits can get on the list of Best Workplaces for Commuters and receive high-level programs and services tailored to each respective award category.

Including Best Universities for Commuters & Best Sites for Commuters



As the transportation landscape has evolved, so have the needs of specific program participants. As an acknowledgment of this, BWC offers tailored program support for Workplaces, Universities, and Sites offering exceptional commuter benefits.

Participation Stats: Workplaces, Universities, and Sites



BEST

Workplaces
for CommutersSM
2023

More than
600
workplaces
have the
BWC
designation
in 2023!

BWC has members in
22 states in the U.S.

Top 5 States with the Most Best Workplaces for Commuters

| RANK | STATE |
|------|----------------|
| 1 | Florida |
| 2 | California |
| 3 | Virginia |
| 4 | Texas |
| 5 | North Carolina |

BWC Members by Type

BWC EMPLOYERS

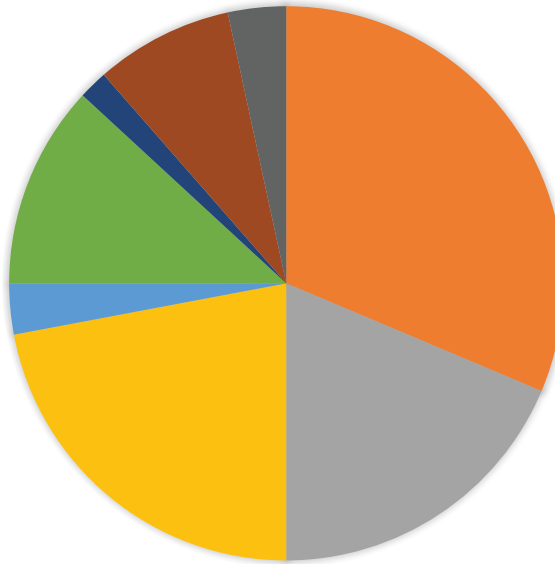
- All States Except Florida (18.1%)
- Florida Only (30.5%)
- Partners (21.4%)

BEST SITES

- All States Including Florida (2.9%)
- Partner (11.5%)

BEST UNIVERSITIES

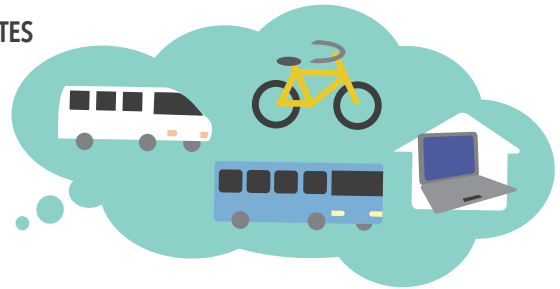
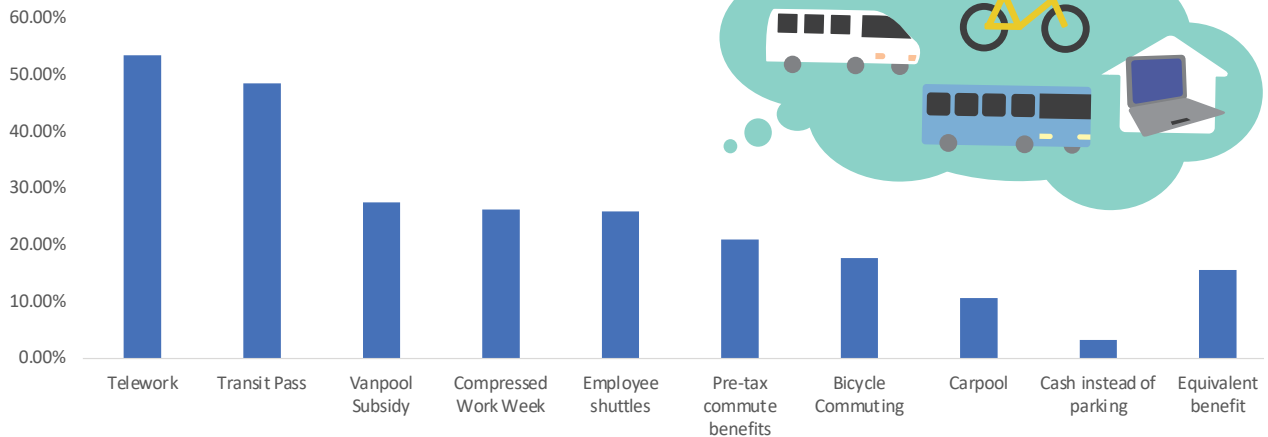
- All States Except Florida (7.8%)
- Florida Only (3.3%)
- Partners (1.6%)



Harvard research cites that for every 15 minute increase in commute time, job satisfaction scores decrease another four percentage points.

Primary Benefits Offered by Members

PRIMARY BENEFITS OFFERED BY WORKPLACES, UNIVERSITIES, & SITES



11

is the median number of primary & supporting programs offered by employers

How Many Commuter Benefits do Members Provide?

13

is the average number of primary & supporting programs offered by employers



Top 20 Supporting Services Offered by BWC Members

| | BENEFITS OFFERED | % OF BWC MEMBERS PROVIDING BENEFIT |
|----|---------------------------------------------------|------------------------------------|
| 1 | Secure Bicycle Parking | 59% |
| 2 | Transportation Management Association Membership | 57% |
| 3 | Transportation Coordinator | 55% |
| 4 | Onsite Showers and Lockers | 53% |
| 5 | Ridematching Program | 52% |
| 6 | Flextime | 49% |
| 7 | Healthy Initiatives | 48% |
| 8 | Electric Vehicle Recharging | 40% |
| 9 | Telework (less than 6% trip reduction) | 33% |
| 10 | Park-and-Ride Lots | 31% |
| 11 | Onsite Amenities | 31% |
| 12 | Transportation Kiosk | 31% |
| 13 | Fleet Vehicles | 30% |
| 14 | Preferred Parking for Carpools/Vanpools | 28% |
| 15 | Compressed Workweek (less than 6% trip reduction) | 26% |
| 16 | Third-party Vanpool | 24% |
| 17 | Deduct Transit Costs from Pre-tax Income | 21% |
| 18 | Car-sharing Program | 18% |
| 19 | Bikeshare Program | 16% |
| 20 | Other Benefits | 16% |

Connect with Best Workplaces on Social Media!



For additional help with how to get the word out about your Best Workplaces for CommutersSM designation, please contact:

Julie Bond, Program Director
jmbond@usf.edu • 813-974-9799



BWC Snapshot CONTINUED

Worker Access to Subsidized Commuting Benefits, Flexible Workplace and Flexible Work Schedules

In 2023, many workplaces provide employees with access to various benefits that can impact how, when and if workers choose to commute. Subsidized commuting benefits can increase use of transit and vanpooling by providing employees with up to \$300 per month tax-free subsidy to workers for riding transit or vanpooling to work. These commuting benefits can also be provided as a pre-tax benefit to employees. In addition, employers can allow workers to adjust the time of the commute trip by providing them with flexibility in setting their work schedule. Finally, allowing employees the option of working from home can determine if a work trip is even required. The following summarizes the extent to which civilian workers had access to these options in 2022.

9% OF CIVILIAN WORKERS HAVE ACCESS TO SUBSIDIZED COMMUTING BENEFITS

- 16% of civilian workers in establishments with 500 workers or more have access to subsidized commuting benefit
- 6% of civilian workers in establishments with under 100 workers have access to subsidized commuting benefits

8% OF CIVILIAN WORKERS HAVE ACCESS TO FLEXIBLE WORKPLACE ¹

- 10% of workers in establishments with 500 workers or more have access to flexible work schedules
- 7% of workers in establishments with under 100 workers have access to flexible work schedules

14% OF CIVILIAN WORKERS HAVE ACCESS TO FLEXIBLE WORK SCHEDULES ²

- 17% of workers in establishments with 500 workers or more have access to flexible work schedules
- 13% of workers in establishments with under 100 workers have access to flexible work schedules



BWCs are collectively changing how **2 million** employees commute to and from work each day!

¹ Flexible workplace. This benefit permits workers to work an agreed-upon portion of their work schedule at home or at some other approved location, such as a regional work center. Such arrangements are especially compatible with work requiring the use of computers linking the home or work center to the central office.

² Like telework, this benefit permits workers to work an agreed-upon portion of their work schedule at home or at some other approved location, such as a regional work center. Such arrangements are especially compatible with work requiring the use of computers linking the home or work center to the central office. Source: U.S. Bureau of Labor Statistics. National Compensation Survey: Employee Benefits in the United States, March 2022. <https://www.bls.gov/ncs/ebs/benefits/2022/home.htm>



Best Workplaces for Commuters is managed by the Center for Urban Transportation Research at University of South Florida